



Union of Chambers of Turkish Engineers and Architects  
**Chamber of Survey and Cadastre Engineers**

Türk Mühendis ve Mimar Odaları Birliği  
**Harita ve Kadastro Mühendisleri Odası**

**Commission 12 - International Affairs**

Union of Chambers of Turkish Engineers and Architects  
**Chamber of Survey and Cadastre Engineers**

Türk Mühendis ve Mimar Odaları Birliği  
**Harita ve Kadastro Mühendisleri Odası**

Commission 12 - International Affairs  
**Uluslararası İlişkiler Komisyonu**

---

Sümer-1 Sokak No: 12/10 06440 Kızılay/ANKARA  
Tel: 0.312 232 57 77 (Pbx) - Fax: 0.312 230 85 74  
e-mail: [hkmo@hkmo.org.tr](mailto:hkmo@hkmo.org.tr)



The Union of Chambers of Turkish Engineers and Architects (UCTEA) carries the status of a public organisation as defined in the Article 135 of the Constitution of the Republic of Turkey, and acts as an NGO. Article 135 reads that the professional organisations which are established by law and of which organs are elected by secret voting among their members are public entities to meet the common requirements of professions, to facilitate professional works, to ensure the development of the professions in line with general interests of the country and to place the honesty and security in the essence of the relations and to protect professional ethics and disciplines. Since 1954 above definition has been transformed comprehensively and gained richness by changing circumstances of Turkey and the world.

By taking into consideration the extraordinary developments and interactions in the field of science and technology, telecommunications and international relations it becomes necessary for the UCTEA to transform itself by keeping its original principles in order to match with those developments experienced widely in the world.

The UCTEA is one of the well-known organisations in Turkey which provides a roof to qualified, organised professional disciplines working at the every stage of the production and the life. Under this mission, the UCTEA commits itself to undertake the responsibility of taking its place in augmentation of production, increase of standards and in the structural adaptation programmes and regulations introduced by the international conventions which Turkey undersigned.

To increase the level of professional production and to perform supervisional functions in the entire production process have crucial importance in the struggle against low level of quality and standards, uncontrolled production and uncontrolled urbanization. As being a union of almost 60 disciplines covered by 23 chambers, the UCTEA has been and is in the effort of updating institutionalising and strengthening its technical and professional background. The UCTEA, however, does not only perform at the professional and personnel achievements, but also shows an effort to contribute to the development of democracy and the promotion of human rights. Since the foundation, every board management with their free

and independent will has approached to these issues in a sensitive manner and shown a close interest to the social and political development of Turkey. This gives to the UCTEA a specific and distinctive character in comparison with other similar professional organisations in Europe and the world. The brochure in your hands will provide a good knowledge for an organisation which produces views and proposals in a wide range of area through the voluntary and organised efforts of its members. We believe that this brochure will play an important role in removing the neglect of the bureaucracy and political authorities towards us in the process of realisation of the harmonisation and integration with Europe. Moreover, we also believe that this brochure will provide a chance for us to promote the UCTEA at the European level and for membership to the international engineering organisations.

## → TURKISH CHAMBER OF SURVEY AND CADASTRE ENGINEERS (CSCE)

Turkish Chamber of Survey and Cadastre Engineers (CSCE) was founded in 1954, is a qualifying body and partially learned society for the exchange of technical information for professional engineers working in surveying and mapping CSCE Headquarter is in Ankara connecting 10 branches, 5 regional representations and 150 provincial representations in Turkey.

There are 8724 registred members.

The main objective of CSCE is to take all necessary measures,

- for the technical improvement of the members,
- to protect the dignity, honor, and benefits of the members,
- to protect the benefits of the society and country,

In order to achieve this general objectives, CSCE

- organizes meetings, conferences, seminars, etc.
- gives ( or takes ) qualification certificates to ( or from ) the survey offices

- publishes technical books, periodicals, user manuals, guides, etc.
- organizes training programs
- provides members with various technical and commercial information
- provides all the necessary public and/or governmental relations
- provides expertising services

Regional representatives of CSCE sign protocol with the municipalities of the region in order to control surveying works wheter in engineering standarts or not. CSCE gives a licenses to newly established project offices and these licenses must be renewed within the year. CSCE also provides expert engineering services when it is requested by society, public autharities and other related organizations.

## HARİTA VE KADASTRO MÜHENDİSLERİ ODASI (HKMO) ←

Adres:Sümer Sokak No:12/10 06440 Kızılay /Ankara-TÜRKİYE

Tel:(0-312) 232 57 77 Fax:(0-312) 230 85 74

E-mail:hkmo@hkmo.org.tr Web site: <http://www.hkmo.org.tr>

- |                                    |  |
|------------------------------------|--|
| <b>Kuruluş</b>                     | : 1954   |
| <b>Üye Sayısı</b>                  | : 8274   |
| <b>Mühendislik Dalı</b>            | : Jeodezi ve Fotogrametri Mühendisliği   |
| <b>Örgüt Yapısı</b>                | : 10 Şube, 5 Bölge Temsilciliği, 150 il ve ilçe temsilciliği   |
| <b>Periyodik Etkinlikler</b>       | : Harita Kurultayı (2 yıl)   |
| <b>Periyodik Magazinler</b>        | : 2 aylık periyodda Harita Bülteni<br>6 aylık periyodda HKM Jeodezi, Jeoinformasyon,<br>Arazi Yönetimi Dergisi |
| <b>Yurtdışında Üye ve İlişkide</b> |  |
| <b>Olduğu Organizasyonlar</b>      | : Uluslararası Ölçmeciler Birliği (FIG), Uluslararası<br>Kartoğrafya Birliği Birliği(ICA) 1.kategori üyelik    |

## ➔ CHAMBER OF SURVEY AND CADASTRE ENGINEERS

<b>Date of Establishment</b>	: 1954
<b>Number of members</b>	: 8274
<b>Professional branches</b>	: Surveying Engineering
<b>Structure</b>	: 10 branches, 5 regional representations, 150 provincial representations.
<b>Outstanding periodical activities</b>	: Two-yearly Council of Mapping, International Training Seminar on Cartography, International Symposium on Deformation, International Symposium on GIS/GPS (1997), International Symposium on GIS (İstanbul 2002)
<b>Periodicals</b>	: Six monthly Bulletin of Chamber of Survey and Cadastre Engineers of Turkey. 2 monthly Bulletin of Mapping
<b>Membership in foreign organizations</b>	: Member of the Federation International of Surveyors.(FIG), International Cartographic Association (Affiliate membership, category1)

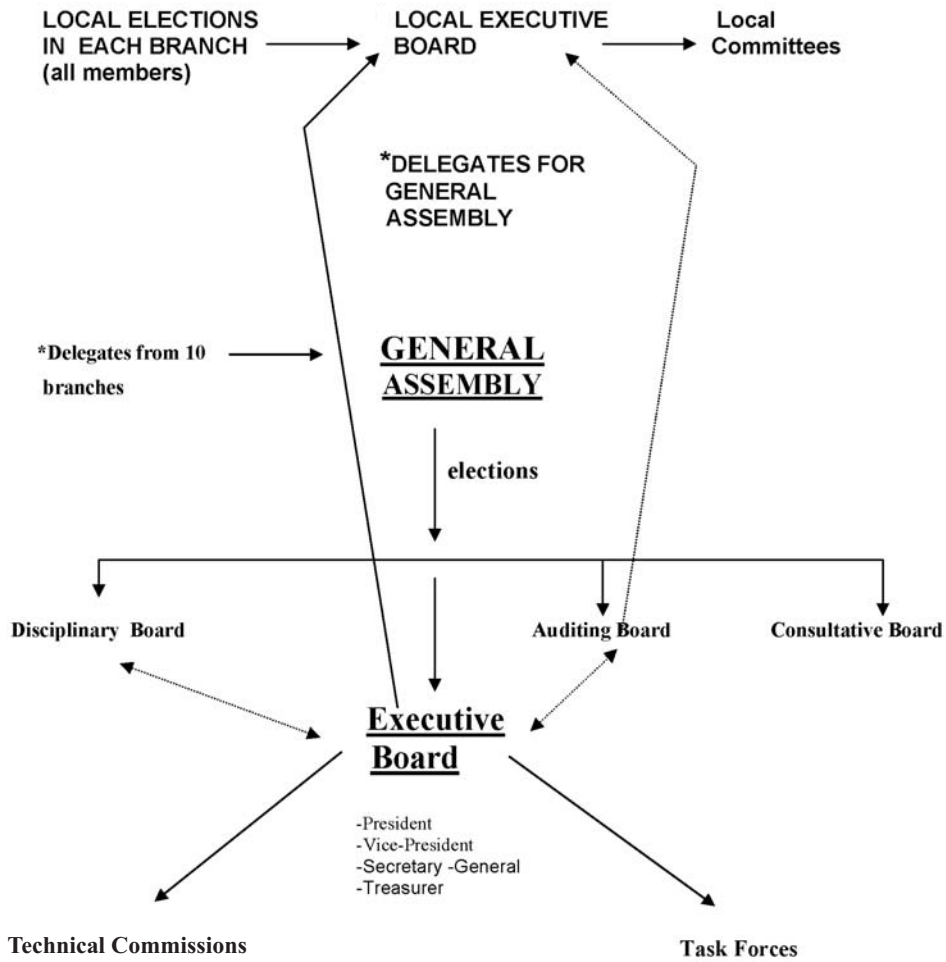
## ➔ OBJECTIVES OF THE TURKISH CHAMBER OF SURVEY AND CADASTRE ENGINEERS (HKMO)

The main objective of HKMO is to improve the knowledge of surveying and cadastre engineers, to protect the dignity, honor, authority and the benefits of the members, and to protect the benefits of the public and Turkey. In order to achieve this objective,

- To use the new developments and knowledge in the field of survey engineering for the benefit of Turkey, if necessary, to contact with the professional engineering organizations abroad, to improve the knowledge of the members after graduation, and to improve and apply the theoretical and practical knowledge,

- To contact and/or work related Ministries and professional organizations in order to improve and develop survey engineering education according to the need of Turkey,
- To work with the public organizations and academic institutions during the preparation of the laws and decrees related to survey engineering,
- To provide suggestions to the public organizations or work with them in order to find solution to peoples housing problem.
- To provide suggestions to the public institutions and organizations to reorganize the contract regulations up-to-date conditions so that they would be beneficial to Turkey and the public,
- To discuss the new developments in survey engineering, and introduce these developments to the public and colleagues,
- To provide the distribution of the technical books, documents, rules and regulations and standards related to survey engineering to members, and to notify the members and public about the activities of HKMO by sending periodic publications,
- To check the activities and projects of the independent survey engineering offices according to the regulations,
- To notify the members to obey the rules and regulations of HKMO when they carry out their duties and to warn and/or punish those who do not obey the rules and regulations,
- To work with the Union of Chamber of Turkish Engineers and Architects and with the other professional organizations for the mutual interests,
- To spend an effort to increase the living standards of members by getting the value of the engineering work,
- To contact with the public and other professional organizations to increase the opportunity of employment of the members so that they could perform their abilities, on the other hand, to start initiating necessary measures to increase the quality of the programs of the educational institutions so that a rational basis between growth and demand in survey engineering could be established,
- To open regional and local offices throughout Turkey to improve the relationship between HKMO and its members during the accomplishment of the abovementioned goals, also to appoint engineering control mechanism to these offices.

# ORGANISATIONAL STRUCTURE OF CSCE



## Technical Commissions

1. Professional Practice
2. Professional Education and Periodicals
3. Land Information Systems and Data Standards
4. Engineering Measurements
5. Geodesy
6. Surveying and Theory of Errors
7. Photogrammetry
8. Cartography
9. Cadastre
10. Urban Development and Rural Land Consolidation
11. Land Valuation
12. International Affairs



Union of Chambers of Turkish Engineers and Architects  
**Chamber of Survey and Cadastre Engineers**

Türk Mühendis ve Mimar Odaları Birliđi  
**Harita ve Kadastro Mühendisleri Odası**

# INFORMATION

**Commission 12 - International Affairs**

**2004**